

LESLIE MIDDLE SCHOOL

OUR VISION:
ALL STUDENTS GRADUATE AND
ARE PREPARED FOR A SUCCESSFUL LIFE



Jennie Madland, *Principal*

Robin Buckingham, *Assistant Principal*

503-399-3206

Parent/Student Handbook

2020-2021

TABLE OF CONTENTS

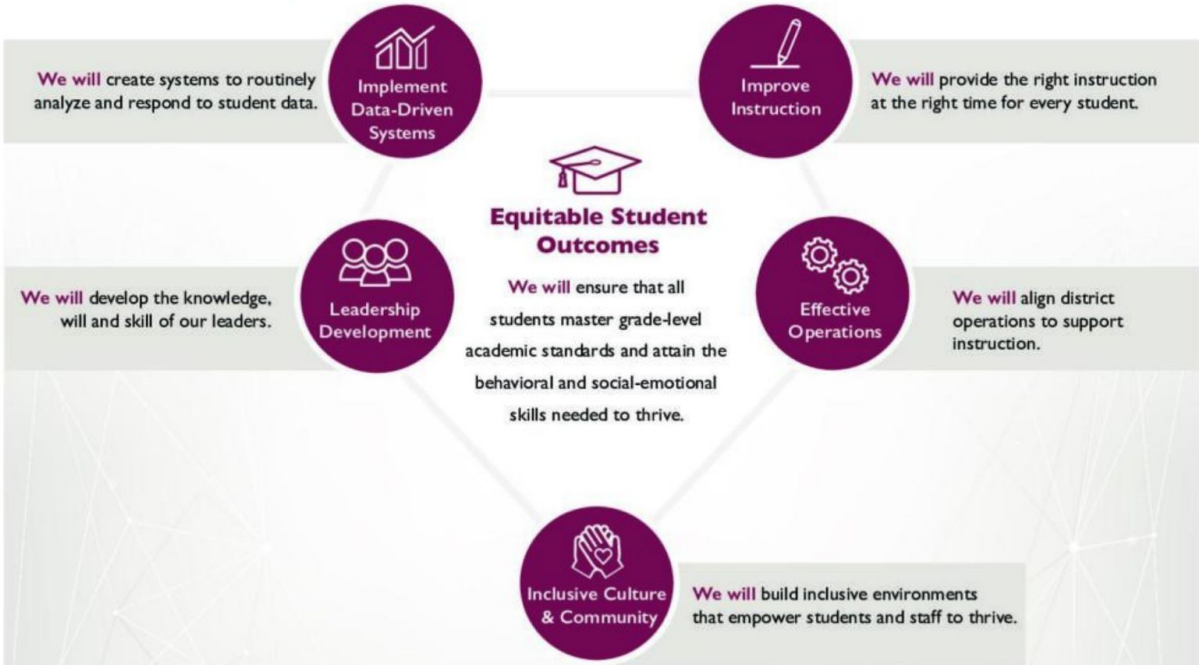
Strategic Plan	
Comprehensive Achievement Plan	
Bell Schedules/Contact Information	
Parent Involvement	
School Information	
COVID-19	
Attendance	
Athletics	
Behavior Intervention Process	
Student Life	
Dress Code	
Getting To & From School	
Binders & Other Organization Tools	
Grading	
8th Grade Promotion	
Personal Property	
Computer & Library Use	
Student Records	
Health & Safety/LION Pride	
Title 1 Information	
School-Wide Expectations	



2019-22

Salem-Keizer Public Schools Strategic Plan

Our Vision: All students graduate and are prepared for a successful life.



Key Performance Indicators

These indicators and outcomes provide check-points for student success.

Strong Attendance	Early Literacy English	Early Literacy Spanish	Benchmark Reading & Math	Language Acquisition	Freshman Success	High School Completion
--------------------------	-------------------------------	-------------------------------	-------------------------------------	-----------------------------	-------------------------	-------------------------------

LESLIE MIDDLE SCHOOL

BELL SCHEDULES

DISTANCE LEARNING BELL SCHEDULE

PERIOD	TIME	MINUTES
Staff open time	8:00-8:00	0
Advisory (All 4 days)	8:00-8:15	15
1	8:15-9:00	45
2	9:00-9:45	45
LUNCH Students	9:45-10:15	30
LUNCH Staff	9:45-10:00	15
Office Hours Staff	10:00-10:15	15
3	10:15-11:00	45
4	11:00-11:45	45
5	11:45-12:30	45
Office Hours	12:30-1:00	30
Staff Work Day	8:00-1:00	5:00 xyjzÜk b jll VaÄ

BLENDED LEARNING BELL SCHEDULE with STAGGERED PASSING TIMES

6th Grade 1 Cohort UH, 1 WF		7th Grade 1 Cohort WF, 1 UH		8th Grade 1 Cohort WF, 1 UH	
PERIOD	TIME	PERIOD	TIME	PERIOD	TIME
ADVISORY	8:00-8:25	1ST	8:00-9:08	1ST	8:00-9:03
1ST	8:30-9:33	2ND	9:13-10:16	2ND	9:08-10:11
2ND	9:38-10:41	ADVISORY	10:21-10:46	3RD	10:16-11:19
3RD	10:46-11:49	LUNCH	10:46-11:16	4TH	11:24-12:27
LUNCH	11:49-12:19	3RD	11:21-12:24	LUNCH	12:27-12:57
4TH	12:24-1:27	4TH	12:29-1:30	ADVISORY	1:02-1:27
5TH	1:32-2:40	5TH	1:35-2:40	5TH	1:32-2:40

IMPORTANT CONTACT INFORMATION

2 Mō '5 _b/Z.....^{aa}Ūp'Pää'pYŪá'

' M.....^{aa}Ūp'Pää'pBää'

Attendance Reporting Line: 503-375-7833

<jZMjZ'VaZM {aZ'1ZyjZ'2 bXjZ'@annj,, ZUyqZ'_nx'| uVhk b` ZfZl {yS
yVaZX| jZySMIX'bx unx{Ml{ 'b_nxk Mlml a'

Leslie M.S. Website- <http://leslie.salkeiz.k12.or.us/>

Administrative Team	
<xđ VđŸj'	/Zl bZ'2 NŸjM X'
° yyby{Ml{ '<xđ VđŸj'	?nUđ b` ƒ M b` aNŸ'
Office Support Team	
5 _b/Z'2 MIMZx'	*yNUZj'2 nxZl n'
?Z' by{xNŸ'	† ZVjđM<ZxZ%o
5 _b/Z'@uZVđŸjby{'	ONŸđ M1nuZ%o
° {{Zl XMVZ'	ƒ xđđXM2 MlM@ xxZ{{'
ƒ nni i ZZUzX'	?nyM3bZUjM
) ZNj{a ƒ NjZX'' yyby{Ml{'	/ jZ'2 MlZ{{b
Student Support Team	
† n yZjnx'' '0'	OZjjt'(xZZx'
† n yZjnx'' '1'L'	<Z{Z'AZjjZx'
ƒ ZaMfmx'@uZVđŸjby{' '0'	ƒ nU'@nM Zl UZx'
ƒ ZaMfmx'@uZVđŸjby{' '1'L'	2 NŸi † njUl xl'
@ZV xđ† @uZVđŸjby{'	3njMl BxUjWa'

WELCOME LESLIE STUDENTS & PARENTS!!!

HOW DOES THE 2020-2021 SCHOOL YEAR LOOK DIFFERENTLY BECAUSE OF COVID-19?

@ VZ, Z' MZ' UZ' b l b` {aZ' yWannj' tZM' b` f nk uxZaZl ybZ' z by(Ml VZ' tZM' b` S{aZxZ', bjj' UZ' k Ml t' VaMl` Zy' _nx'n| x'yWannj' Vnk k | l b' t' X| x b` {aZ' Y' U' Y' U' Y' U' yWannj' tZM' a' V{ b' t' b' z ySyunx{yS Vnl _ZxZl VZyS VjyZy' M' nl` n{aZxZjZk Zl {y'n_n| x'yWannj' Vnk k | l b' t', bjj' UZ' M' H| y{ZX' nx' xZk n' fZX' UMyZX' nl` {aZ' | b' Ml VZ' n_ {aZ' aZM' {a' XZuM' {k Zl { Ml X' jn' Vj' M' {anx' b' z y' H Z', bjj' Xn' n| x' UZy{ nl` {aZ' yWannj' {ZM' {n' U| b' X' Vnl l ZV{ ZXl Zyy' b' {aZ' f' b' | M' j' ZM' b' ` Zl f' b' nl k Zl {a' z' k y' xZ' f' z, ZX' b' {a' y' aMl XUnni', bjj' Vnl {b | Z' {n' UZ' | uXM' ZX' Ml X' xZ' f' z, ZX' M' y', Z' uxn' xZy' {axn| ` a' {aZ' tZM' a'`

WHY SHOULD I BECOME INVOLVED AT LESLIE MIDDLE SCHOOL?

z | x b` {aZ' Y' U' Y' U' Y' U' yWannj' tZM' S, Z', bjj' _njn, {aZ' | b' Ml VZ' n_ {aZ' Xb' {x b' { Ml X' jn' Vj' aZM' {a' M' {anx' b' z y' a' j{an| ` a', Z' MZ' | l y| xZ' b' {aZxZ', bjj' UZ' M' aJZ' {b' Z' fZl {yS{aZxZ', bjj' UZ' n{aZxZ', M' y' _nx' uMzI {y' {n' UZ' Vnk Z' b' f' n' j' fZ' b' {aZ' tZy' b' z Vnk k | l b' t' a' <MzI {f' Z' M' aZx' Vnl _ZxZl VZyS <MzI {f' j| U' k ZZ{b` yS nx' f' n' j| l {ZZx b` ` tn| x' {t' k Z' MZ' ynk Z' n_ {aZ' ` xZM', M' y' {n' UZ' Vnk Z' Ml` M' {b' z' k Zk UZ' n_ {aZ' yWannj' a' <MzI {y' | M' X' b' M' y' u' j' M' t' f' M' j' x' n' j' Z' b' {aZ' M' M' X' Z' k b' y' WZy' n_ y{ | XZl {y' a' y' M' xZy| j{S, Z', bjj' UZ' Vnl y' b' X' x b` ` an, {n' U| b' X' y' {xnl` Vnl l ZV{ tnl y', b' a' uMzI {y' Z' fZl, a' b' z y{ | XZl {y' MZ' jZM' b' ` b' {aZ' f' b' | M' j' yZ{ {b` a' ` j{an| ` a' {aZ' nuunx| l b' t' z y' j' b' {ZX' UZj n, ` k M' UZ' M' M' M' j' Z' M' X' b' _ZxZl {f' t' k Z' y' nx' j' nni' X' b' _ZxZl {f' t' X| x b` {aZ' Y' U' Y' U' yWannj' tZM' S, Z' MZ' Vnk k b' {ZX' {n' y| uunx{b` ` y{ | XZl {y' {axn| ` a' U| b' X' b` ` XZZu' xZjM' tnl yab' y', b' a' _M' b' t' z y' M' y', Z' i l n, ` aZl ` uMzI {yS | M' X' b' M' y' l` V' MZ' {Ml Zxy' MZ' M' {b' z j' t' b' f' n' j' fZ' b' ` yWannj' Sy{ | XZl {n' | Vnk Z' y' b' VxZM' jZ' E) ZxZ' MZ' ynk Z' n_ {aZ' k Ml t' nuunx| l b' t' z y' tn| ` a' M' z' {n' y| uunx{ n| x' y{ | XZl {y' Ml X' {aZ' ZX| V' M' tnl N' j' Zl f' b' nl k Zl {M' tZy' j' z`

Åã (x' M' X' z' < n' k n' { tnl ÅGnj| l {ZZx' t' n' n' X' b' M' l' n' X' Å' _Zx' @' v' annj' < n' ` x' M' ÅZ Zl {n' X' Å' t' b' X' M' t' M' y' b' y{ (Ml VZ' Å' t' a' Ml Z' xnl Z' y' Å' @' u' z' j' j' b' ` z' Z' t' n' n' X' b' M' l' n' X' Å' Ml VZ' y' Å' @' M' l' M' i' u' x' V' M' tnl _Z' fZl {y' Å) nl nx' ? n' j' VZ' jZ' U' x' M' tnl ` Å' @' u' z' V' M' j' Z' fZl {y' Å' H' n' x' i' M' l' ank Z' { M' i' y' Å' ` G' z' { | {n' x' y' Å' 5' u' Zl `) n| y' Z' Å' 2 | y' b' u' xn' ` x' M' y' Å' ` Wnk u' Ml b' y' { _nx' Vnl VZx{ y' Å' j' M' y' x' n' k y' a' Z' j' u' Å' | l X' x' M' y' Z' y' Å' < MzI {f' j| U' 5_ b' z' x' Å' 5 {aZ' x' b' z' M' y'`

HOW DO I GET STARTED AS A VOLUNTEER IN THE SCHOOL COMMUNITY?

f' nl {M' {n| n' x' k N' b' ` n_ b' z' {n' b' b' t' MZ' {aZ' u' xn' VZy' y' a' ` j' j' b' X' b' f' b' | M' j' y' k | y{ Vnk u' jZ' Z' Ml X' u' M' y' M' M' t' k' b' M' j' U' Ml ` xn| l X' V' a' Z' M' a' ` ` n' x' M' X' b' tnl N' j' b' _nx' k M' tnl ` M' lnl {f' a' b' y' u' xn' VZy' y' S' u' j' Z' M' j' Z' y' Z' z' {aZ' z' b' y' {x b' f', Z' U' y' b' z' n' x' Vnl {M' {n| n' x' n_ b' z' {ZM' ` _nx' XZ' {M' y' a'`

IS THERE A LESLIE PARENT CLUB?

AaZ'u| xunyZ'n_<MZI {t j| U'by{n'uxn'fXZ'M'nuunx{| l q't'_nx'uMZI {y{n'y| uunx{| {aZb'Va'pX'MIX' {aZb' yVannj'Vnk k | l q't'a' AaZ'1ZyjZ' {ZMk' fMj| Zy' {aZ' b' yb' a{SZ. uZxtZl VZy'MIX'uZxyuZV{b'Zy'n_{aZ' Xb'ZxyZ' 'xn| u'n_y{| XZI {y'M{ZI Xb' 'n| xyVannj'a' y'y| VaSMj'n, b' 'nx'uMZI {b' u| {b' i Zt'yty{Zk y'MIX'uxnVZyyZy' , k'ab' {aZ' yVannj'by'ZyyZI {b'j| {n'yZxfZ' {aZ' Xb'ZxyZ' l ZZxy'n_n| x'y{| XZI {y'MIX'_Nk' b'Zy'a' AaZ' w| q't' {ZMk' , b'j' NXX'M_xZya' jZI y{n'ZI y| xZ' XZVyb'ni y'k' NkZ'y| uunx{| Mj' jZM' Zxy' {n' xn, 'MIX'Wab'Z'fZ' {aZ' b' un{ZI {b'j' Jn| 'VM'UZVnk Z'M' W{b'Z' k' Zk' UZx'Ut' M{ZI Xb' ' {aZ' <MZI {t j| U'k' ZZ{b' 'y' {aM' MZ' yVaZX| jZX'ni' {aZ' _by' {2 ni XM'n_ZMwa' k' ni' {a' _xnk' 'a' @U' 'a' @U' uk' 'a' 5| x' _by' {k' ZZ{b' 'by' yVaZX| jZX' _nx' 5V{nUZx'a\$YUYU'a'

WHEN ARE PARENT/TEACHER CONFERENCES? HOW DO THEY LOOK FOR 2020-21 SCHOOL YEAR?

<MZI {pAZNWaZx't ni' _xZI VZy' {MIZ' u'jWZ' {, b'Z' ZMwa' tZM'a' Mj' Vnl' _xZI VZy', b'j' {MIZ' u'jWZ' ni' '5V{nUZx'U'a' l' 'Ya' M'X' @x' b' ' Vnl' _xZI VZy', b'j' UZ' aZjX' ni' '2 M'Va' U'a' z' | x' b' ' {aZ' YUYUYUYUY' yVannj' tZM'S, Z', b'j' _njjn, ' {aZ' ' | b'XMI VZ' n_{aZ' Xb' {x' b' {MIX' j'n V'j' aZM' {a' M' {anx' b' Z' ySMy' M' M' y'an, Vnl' _xZI VZy', b'j' jnni' b' {aZ' f' b' | Mj' yZ' {b' 'a' AaZ' yVannj' n_ b'Z' {ZMk' , b'j' yZI X'n| {y'uZVob'by' M' n| {Vnl' _xZI VZy' Mj', Z' Z' VjnyZx' {n' {aZ' XMZY' ux'n' f' XZx'a' Atub' Mj' tS' Nk' b'Zy' aM'Z' {aZ' nuunx{| l q't' {n' k' ZZ' , k'a' Mj' k' M' t' {ZMwaZxy' Mj' l ZVZy' M' t' a' t' ni' _xZI VZy' MZ' Z' Z' x' Mj' t' X' nu' b' SMI' X' MZ' aZjX' ni' M' by' {Vnk' ZS' by' {yZx' f' ZX' U' M' y' a' }

Aaby' by' y| U'ZV' {n' VaM' ' Z' , k'a' _| x{aZx' | b'XMI VZ' xZjMZX' {n' t' 5G' z' 'U'a' <jZMjZ' l n{Z' {aM' Mj' Vnl' _xZI VZy' , b'j' UZ' U'U' k' b' | {Zy' b' jZI' {a' uZx' uMZI {p' | MXXbM'a' * _NXX' b' ni' Mj' {k' Z' by' l ZZXZXS, Z' Mj' {aM' yuZVob'j' MXXM' Zk' Zl {y' UZ' k' NkZ' , k'a' b' Xb' f' b' | Mj' {ZMwaZxy' * _uMZI {y' p' | MXXbM'y' , n| jX' j' b' Z' {n' yZ' | u' NXX' b' ni' Mj' {ZMwaZx' Vnl' _xZI VZy' n| {y' b'Z' xZ' | jMj' t' yVaZX| jZX' uMZI {p' ZMwaZx' Vnl' _xZI VZy' S uMZI {y' p' | MXXbM'y' k' M' Vnl' {Mw' {aZ' y' | XZI {y' Vn| l yZjnx'a' t' n| l yZjnx'y' , b'j' , nxi' , k'a' VjMjyxnk' {ZMwaZxy' {n' yZ' | u' b' _nxk' Mj' Vnl' _xZI VZy' {n' k' ZZ' {aZ' l ZZXy'n_y' | XZI {y' M' X' uMZI {y' a' }

SCHOOL INFORMATION

z' | x' b' ' t' jZI XZX' 1ZM' b' ' S y' | XZI {y' , b'j' aM'Z' yuZVob' | b'XMI VZ' ni' Zl {Zx' b' ' M' X' Z. k' b' ' {aZ' U| b' X' b' ' a' z' nnxy' , b'j' UZ' Mjy' b' l ZX' Ut' Vhanx' {VhjnX' M' X' ' x' NkZ' jZfZj'a' t' nk' k' | l b' M' ni' ni' {k' Zy' n_Zl {xM' VZ' M' X' X' b' k' by' Mj' , b'j' UZ' ux'n' f' b' Z' X' yan| jX' , Z' xZ' | x' {n' b' U| b' X' b' ' jZM' b' ' X| x' b' ' {aZ' YUYUYUYUY' yVannj' tZM'a' }

SCHOOL HOURS

AaZ' 1ZyjZ' 2' b' XjZ' @' annj' n_ b'Z' by' nuZl' 2' ni' XM' {axn| ' a' ' x' b' M' _xnk' ' a' @U' ' 2' {n' B' @U' <2' a' AaZ' {ZjZuanl' Z' l' | k' UZx' _nx' {aZ' k' M' b' n_ b'Z' by' 503-399-3206.

CONTACTING LESLIE MIDDLE SCHOOL STAFF

AZMwaZxy' MZ' ni' X| t' 2' ni' XM'y' _xnk' ' a' @U' ' 2' {n' B' @U' <2' S 2' ni' XM' ' x' b' M' a' AZMwaZx' n_ b'Z' an| xy' MZ' Vnk' k' | l b' M' Z' ni' {aZ' yVannj' , ZUY' b'Z'a' }

ž | xđ` {aZ`k Mhxđ† n_ {aZ` XMŠ {ZMwZxy MZ {ZMwAb` Š, nxi b` , ěa`y{ | XZI {y`nx`uxZuMđ` _nxjZyynl y` 5_ZI` {aZ` UZy{ , M` {n`Vnl {N{` M{ZMwZx` by` Ut` Zk Mđ` An`Vnl {N{` My{M_ k Zk UZx` Ut` Zk Mđ` | yZ` {aZ` _njjn, b` ©

lastname_firstname@salkeiz.k12.or.us.

*_l ZVzyMtŠ{ZMwZxZk Mđj b i y MZ Myn`nl` n| x`yVannj , ZUyđZ © <http://leslie.salkeiz.k12.or.us>

SCHOOL CLOSURES AND INCLEMENT WEATHER

*_l {aZ` ZfZI {`n`_unnx` , ZMāZxS @VZk `OZbZx` <| UjđV` @Vannjy`n`_bVjy` , ěj` uxnfđXZ` | bXMI VZ`nl` unyđđjZ` Vjny| xZy` ž | xđ` `† nk uxZaZl ybZ` ž by{MIVZ` 1ZMđ b` ` M Xpnx` ŁjZI XZX` 1ZMđ b` Š {aby` uxnvZyy` ěb Vj| Xb` ` Vjny| xZy`Ak M`jnni` Xb`_ZxZl {j† M`y`n| x`Mđđ† {n`y| uunx{` M`ank Z`jZMđ b` ` Z.uM Xy` ` y`b` uxZfđn| y†ZMxyS {aZ` XZVybtl` Ut` Xb{`xđ{` n`_bVjy` by` k MZ` Ut` a`Ā` 2` a` ° XXĀtl Mj†SM† b` _nxk Mtl Mđn| {yVannj Vjny| xZ` VM`UZ`_n| I X`nl` {aZ` Xb{`xđ{` , ZUyđZ` . . . [yMj Zb%ŪY`nx`| y`](#)

SCHOOL ATTENDANCE

° {Zl XMI VZ` <anl Z`ā Ūb`pāā`āāpP`

ž | xđ` {aZ` ŪŪŪŪŪŪŪ yVannj†ZMŠM{Zl XMI VZ` , ěj`UZ` {MIZl` M X`y{ | XZI {y` MZ` xZw` bZX` {n`yan, {aZ`bx` Zl` MZk Zl` {XMđ† , ěa`† nk uxZaZl ybZ` ž by{MIVZ` 1ZMđ b` ` a` <MZl {y` MZ` xZw` Zy{ZX` {n`Vj} {aZ` ŪB`an| x` M{Zl XMI VZ` j b` Z` {n` xZunx{` MđyZl VZy`UZ`nxZ` ŪŪŪ` <2` nl` {aZ` XM` n`_M` Mj` XM` MđyZl VZ` <jZMjZ` uxnfđXZ` y{ | XZI {y`l` Nk` ZS` xNkZSXMZ` n`_MđyZl VZSxZMynl` _nxMđyZl VZ` M X`bZl {b† {aZ` uZxynl` jZMfđ` {aZ`k ZyyMIZ` ěuMāZl {S` | M X M ŠZ{V`A` ° , xđ{Zl` Z.V` yZ` , aZl` {aZ`y{ | XZI {xZ{ | xl` ySb` Vj| Xb` ` {aZ` MđnfZ` b` _nxk Mtl M` M X` yb` l` ZX` Ut` {aZ` uMāZl {` by` Mjyn` MWZu{MjZ` _nx` Z.V` yZx` MđyZl VZy` Aaby` l` n{Z` k` | y{`UZ` { | xl` ZX` b` ` {n` {aZ` M{Zl XMI VZ` n`_bZ`UZ`nxZ` yVannj` | unl` {aZ` y{ | XZI {y`xZ{ | xl` Aaby`uxnvZyy`Zl` y| xZy`{aM` Mj` MđyZl VZy`nW| x` , ěa` {aZ` il` n` , jZX` Z`n`_ {aZ` uMāZl {y` <MāZl {y` , an`Xn`l` n{` Vj} b` MđyZl VZy`nx` , xđZ` fVjđZ` Z.V` yZ` k` M`UZ` Vnl` {N{`ZX` Ut` {aZ` M{`nk MZX` M{Zl XMI VZ` Vjđb` ` yty{Zk` a` @| XZI {y` , an` MāZ` MđyZl {` _nx` {Zl` nx` k` nxZ` Vnl` yZV| {bZ` XM y` , ěj`UZ` M{`nk MđVj† , ěa`XxM` l` _nxk` yVannj`
Oregon law states that parents are legally responsible for making sure their children are in school.

EXCUSED/UNEXCUSED ABSENCES

" .V` yZX` MđyZl VZy` _nxk` yVannj` MāZ` ` bZl` nl` j† _nx` **illness, an emergency in the immediate family, or a medical appointment** M X` k` | y{`UZ` Z.V` yZx` , ěab` {axZZ` ěP` XM y` n`_My{ | XZI {xZ{ | xl` b` ` {n` yVannj` 5xZ` nl` jM` xZw` bZy` {aZ` yVannj` {n` xZfZ` , M† MđyZl VZy` M X` XZ{Zxk` b` Z` , aZ` {aZ`xnXl` n{` ě by` M` | l` Z.V` yZx` nx` Z.V` yZx` MđyZl VZ` ° nx` y{ | XZI {y` , an`yan, `uM{Zl` y`n`_bxZ` | jM` M{Zl XMI VZ` SMXnV{nx`y`l` n{Z` k` M`UZ` xZw` bZX` ° l`† MđyZl VZ` , ěan| {` M Vj} nx` M fVjđ , xđ{Zl` Z.V` yZ` , ěab` Bā`an| xy` , ěj`UZ` k` Mā ZX` Mj` | l` Z.V` yZx`nl` {aZ` y{ | XZI {y` M{Zl XMI VZ` xZVnx`y`

ADVANCE ABSENCES

*_uMxZI {y MZ' M MZ' b' MxMIVZ' {aM' My| XZI {', bji'UZ' MlyZI {S{aZ' uMxZI { 'yan| jX' Vj' n'x'yZI X' Myb' l ZX' l n{Z' {n' {aZ' M{ZI XMI VZ' n_ bZ' a' An' M' aZx', nxi' {aM', bji'UZ' k' byZX' S{aZ' y| XZI { 'yan| jX' b'Z' M' n{Z' {n' Z' Wa' {Z' WaZx' xZw' Zy{b' ' Myb' l k ZI {y' _nx' {aZ' XMI Zy' {aM', bji'UZ' k' byZX' **Vacations & family trips during the school year are generally unexcused** MlyZI VZy' | jZyy' uxZMxM' ZX' M' X' XZZk ZX' {n' aM'Z' M' ZX' | VM' l M' j' UZI Z' b' a'.

MAKE UP WORK

@| XZI {y' MZ' xZyuni y' b' jZ' _nx' k' byb' ' , nxi' X| Z' {n' MlyZI VZy' a' ' by' {aZ' y| XZI {y' xZyuni y' b' b' t' {n' VaZV' , b' a' {Z' WaZxy' {n' b' X' n| { M' n| {k' byb' ' , nxi' a' AaZ' , nxi' 'yan| jX' UZ' k' MZ' | u' My' ynnl' My' uny' y' b' jZ' a' 2 MZ' | u' XZMxj' b' Zy' MZ' MxZ' XZ' | unl' UZ' , ZZI' y| XZI { M' X' {Z' WaZx' a' k' M' UZ' l' ZVZyy' M' t' {n' y' M' M' {Z' X' y' Vannj' }X| x' b' ' n' l' y' b' jZ' M' b' ' An' x' k' MZ' n' {aZ' x' M' M' Zk ZI {y' , b' a' {aZ' {Z' WaZx' a' H' aZI' My' | XZI { 'aM' UZZI' MlyZI { {axZZ' Vnl' yZV| {b'Z' y' Vannj' XMy' S' MuMxZI {k' M' xZw' Zy' {ank Z, nxi' _nxk' {aZ' k' M' b' n' b' Z' Ut' V' j' b' ' a' U' P' A' Paa' i' b' Y' U' a' a'.

LATE ARRIVALS DURING ONSITE LEARNING

z | x' b' ' n' l' y' b' jZ' M' b' ' S' y| XZI {y' , an' M' x' b' Z' j' MZ' {n' y' Vannj' , b' a' n| { M' uMxZI {l' n{Z' k' | y| VaZV' b' M' {aZ' ' {Z' I XMI VZ' 5_ b' Z' a' <xn{ n' Vnjy' M' n| l' X' j' MZ' M' x' b' Z' j' MZ' u' x' n' VZ' X| xZy' , bji'UZ' Vnk' k' | l' b' M' Z' X' | unl' n| x' xZ' { | x' l' {n' n' l' y' b' jZ' M' b' ' a' @| XZI {y' , an' M' x' b' Z' j' MZ' {n' y' Vannj' , b' a' M' uMxZI {l' n{Z' Z' .V| y' b' ' {aZ' b' {M' X' b' Zyy' yan| jX' My' n' VaZV' b' M' {aZ' ' {Z' I XMI VZ' 5_ b' Z' a' t' j' MZ' ' 5? @P' Pa' a' U' aa' A' y' Vannjy' VM' n' l' j' t' M' VZ' u' { M' i' Z' .V| yZ' _nx' {M' X' b' Zyy' _nx' {aZ' _njn, b' ' xZM' n' l' y' b' jZ' j' Zyy' S' k' Z' X' b' M' j' M' u' n' b' {k ZI {y' S' n' x' M' M' b' t' Zk Zx ZI Vt' a' " .V| yZy' y| Va' My' -M' j' M' k' ' Vj' n' V' X' b' X' l' n' { ' n' n' _S' E' y| XZI {n' fZ' xj' Z' u' {S' n' x' -y| XZI {k' byZX' {aZ' U| y' S' X' n' l' n' {k' ZZ' {aZ' 5? @ xZw' b' Zk ZI {y' a'.

AUTOMATED CALLING SYSTEM

1Zy' jZ' 2 b' X' jZ' @/annj' u' j' WZy' ' xZM' b' k' unx' {M' iVZ' n' l' y| XZI { M' {Z' I XMI VZ' a' @| XZI {y' l' Z' XZ' {n' ZI' MZ' M' iX' uZ' x' _nxk' b' Z' Wa' V' j' My' Z' fZ' x' t' X' M' , a' b' Z' M' {Z' I Xb' ' 1Zy' jZ' 2 b' X' jZ' @/annj' a' ' n' x' XZ' x' {n' y| uunx' {uMxZI {y' b' ' Z' {b' ' y| XZI {y' ZI' MZ' X' M' iX' u' xZy' ZI {b' {aZ' b' jZ' M' b' ' Z' b' aZ' x' f' b' | M' j' t' n' x' n' l' y' b' jZ' S' uMxZI {y' , bji'UZ' l' n' {b' Z' X' b' y| XZI {y' MZ' l' n' {u' xZy' ZI {X| x' b' ' {aZ' b' V' j' My' Z' y' a' H' Z' i' l' n, ' {aM' M' x' b' j' UZ' a' M' f' o' n' x' y' k' M' M' b' y' Z' b' k' b' X' jZ' y' Vannj' a' 5_ Z' I' y' i' b' u' b' b' ' by' M' MZ, M' UZ' a' M' f' o' n' x' jZ' M' b' ' {n' k' n' xZ' M' i' x' b' j' UZ' a' M' f' o' n' x' y' b' {aZ' _| {xZ' a' AaZ' UZy' , M' {n' XZM' j' , b' a' {a' b' y' b' y| Z' b' y' Ut' Vnl' {M' {b' ' M' j' uMxZI {y' My' w' b' i' j' t' My' uny' y' b' jZ' , aZ' l' M' k' | j' {b' u' jZ' u' Z' x' b' X' n' x' _| j' j' X' M' MlyZI VZ' n' W| x' y' a' An' Vnl' {M' {uMxZI {y' S, Z' MZ' | y' b' ' M' i' M' {n' k' MZ' X' M' {Z' I XMI VZ' V' j' b' ' y' t' y' {Zk' a'.

CHECK-IN/CHECK-OUT PROCEDURES DURING ON-SITE LEARNING

z | x' b' ' {aZ' Y' O' Y' O' Y' O' y' Vannj' t' Z' M' S, Z' , bji' _njn, ' aZ' ' | b' XMI VZ' n_ {aZ' X' b' y' {x' b' M' iX' j' n' V' j' aZ' M' j' a' M' {an' x' b' Z' y' My' j' MZ' M' x' b' Z' j' MZ' M' iX' n_ b' Z' VaZV' b' y' a' @| XZI {y' M' x' b' b' ' j' MZ' {n' y' Vannj' n' x' xZ' { | x' l' b' ' _nxk' M' i' M' u' n' b' {k ZI {k' | y| VaZV' b' M' {aZ' M' {Z' I XMI VZ' n_ b' Z' a' ' uMxZI {n' x' ' | M' X' b' M' k' M' M' W' n' k' uM' i' t' {aZ' y| XZI {n' x' yZ' I X' M' , x' b' {Z' l' n' {Z' .V| y' b' ' {aZ' MlyZI VZ' M' iX' _njn, b' ' {aZ' y| XZI { M' X' k' b' {M' iVZ' b' {n' V' j' My' a' @| XZI {y' l' Z' Z' X' b' ' {n' jZ' MZ' y' Vannj' UZ' VM' yZ' n_ M' i' M' u' n' b' {k ZI {S' Z' v' S' k' | y| a' M' Z' M, x' b' {Z' l' n' {Z' _nxk' {aZ' b' uMxZI {u' | M' X' b' M' , b' a'.

{aZ'Z.MW{t{k Z'n_Xbyk byNjP° _Zx'yan, b`' {aZ' l nZ'Z'n{aZ' VjMyxnnk {ZnWaZxS{aZ'y{| XZl {by' n_Ux`b` {aZ' l nZ'Z'n{aZ'° {Zl XMVZ'5_bVZ'_nxMH aZV' 5| {®yjb^a

<jZMyZ' l n{ZS{n' Zl y| xZ' {aZ' yMZ{t'n_n| x'y{| XZl {UnXt\$Nj' uMZl {y'MX'° | MXXbM'y'MZ' xZw| bZx' {n' yan, ' uan{n' z', aZl 'VaZV' b`' y{| XZl {y'n| {M' {aZ' M{Zl XMVZ' n_bZ^a * _tn| x'Va|pX' by' {n', Nj' ank ZSVMVa {aZ' U| yS'nx' x|kZ', k'a' ynk Znl Z'n{aZ'x' {aM' MuMZl {SujZMyZ' y{MZ' {aby' b`_nxk Mlbnl' b` Ml nZ' Njhl'°, k'a' M uanl Z'l | k UZx', aZxZ'tn| VM' UZ' xZnWaZx' {n' fZxb| {aZ' b`_nxk Mlbnl' ^a

@| XZl {y'jZM' b`' yWannj' X| x`b`' yWannj' an| xy', k'an| {VaZV' b`' n| {axn|` a {aZ' M{Zl XMVZ' n_bZ', b|j' UZ' Vhl y|kZxZx' {x| M| ^a

ATHLETIC EVENTS

' | x{aZx' Xb|xb|` | bXMI VZ' _nx{aZ' YÜYÜ'YÜYÜ' yWannj' tZM', b|j' UZ' uxnf|kZx' M' M| | {xZ' XMZ^a @| XZl {y'MZ' , Zjvnk Z' M' X' Zl Vn| xMZX' {n' uM{b|uMz' b` S'nxUZ' yuZV{Mnxy' M'SyWannj' MajZ{b' ZfZl {y'M' ynnl' 'Mj', Z' a'MfZ' | bXMI VZ' {n' n'_Zx' {aZyZ' M{b' b|zY^a @| XZl {y' uZV{Mnxy' j|b' Nj'n, ZXÄ VM' aZju' Zl Vn| xMZX' {anyZ', an' MZ' Vnk uZ{b`' Ut' VaZZxb`' _nx' {aZ' {ZM' ^a @ZV{Mnxy' j|b' Nj'n, ZXÄ MZ' Z' uZV{ZX' {n' XZk nl y{xMZX' Vnk k nl Vn| x{Zy' t' M' X'° nnX' yunx{yk M' yabw', aZl' M{Zl Xb`' M' t' MajZ{b' ZfZl {y^a @| XZl {y' b`' M{Zl XMVZ' M' MajZ{b' ZfZl {y' yan| jX' UZ' b`' {aZ' UjZnWaZxy' nx' XZyb| MZX' MZMy' _nx' yuZV{Mnxy^a **Students will not be allowed to roam the school halls. Students with failing grades, poor attendance, or behavior concerns may be unable to participate in after-school activities.**

SCHOOL-SPONSORED ATHLETICS

ž | x`b`' {aZ' YÜYÜ'YÜYÜ' yWannj' tZM\$, Z' k M' nx' k M' l n{ UZ' n_Zx`b`' {aZ' _njjn, b`' yWannj' yunl ynxZX' MajZ{by[©]

l xnyy| n| | {xt' ž' NjÄ' ä^{(a} Sä^{(a} Sä^{(a} Unty| ° b|jy'

' nn{UNj| ž' NjÄ' ä^{(a} ä^{(a} Unty| ° b|jy'

Gnj|ZtUNj| ž' NjÄ' ä^{(a} b|jy'

Gnj|ZtUNj| ž' H b {ZxÄ' ä^{(a} b|jy'

H xZy|j b`' ž' H b {ZxÄ' ä^{(a} Sä^{(a} Sä^{(a} Unty| ° b|jy'

AxWl ž' @x b`' Ä' ä^{(a} Sä^{(a} Sä^{(a} Unty| ° b|jy'

*_n'_ZxZX' {aZxZ', b|j' UZ' MÖBä^aÜÜ' l nl 'xZ' | XMjZ' _ZZ' _nx' ZnWa' yunx{^a An' xZ' by{Zx' _nx' M' t' n' M' t' yunx{S uMZl {y' k | y{ 'jn' nl' {n' {aZ' yunx{y' xZ' by{xMlbnl' unx{Nj' M' M' Nk b|t|k^a Vnk ^a An' M' ujt' _nx' MXXlbnl' Nj' Xb|Vn| | {y' _nx' yunx{y' uM{b|uMz' b` S' n' b` {n' {aZ' yi uMk Zl {unx{Nj' M' X' Vj b' nl' -MXXlbnl' Nj' Xb|Vn| | {^a®' ZZy', b|j' l n{ UZ' xZk U| xyZx' | | jZy' {aZxZ' MZ' Z' .{Zl | Ml b`' VxV| k y{M VZy' b' Vj| Xb`' U| {l n{ jtk kZx' {n' {aZ' _njjn, b`' ©

k nfb`SNWbXZl {SZ. {Zl XZX'bjl ZyySZ{V^Aaby_ZZ'k |y{UZ'uMk'UZ_nxZ {aZ'by{ uxW{bZ'nx{aZ'y{| XZl {', bjl
l n{UZ'Njn, ZX'n'uxW{bZ'a

*k unx{Ml{3n{Z@a{a' l 'a{a'`xMk'y{| XZl {y'2 B@a'aMfZ'MV| xxZl { 'uatybMj' _nx' nl 'xZVhx'UZ_nxZ' {aZt'
k M'uM{bWmZ'b 'Ml'uxW{bZyS' Nk ZySnxk ZZ'y^

STUDENT CONDUCT & INTERVENTIONS

z | x` `nl yqZ'jZMl b` S UZaMfmx' b {ZxfZl {bni y' j` yVannjSnl { 'n'yVannj' y| yuZl ybni S@a| xM' @/annjS
xZfZxyZ' y| yuZl ybni 'MlX'Z.u| jybni ' _xnk 'yVannjAMZ' ynk Z{tk Zy'l ZVZyyMl' _nx'b _xW{bni y'n'yVannj'x| jZy'
MlX'xZ' | jMlbnl y^AaZyZ'XbyVujb Ml' XZVybni y'MZ'k NkZ' {n'Zl y| xZ' {aM' 1ZyjZ' 2 bXjZ' @/annj' by'MyMz' MlX'
nxXZjt'jZMl b` 'Zl fbnl k Zl {MlX' {aM' y{| XZl {y'MZ' MljZ' {n' _nV| ynl ' {aZbxjZMl b` ^

LUNCH/BEFORE & AFTER-SCHOOL BEHAVIOR INTERVENTION DURING ONSITE LEARNING

@| XZl {y', anyZ' UZaMfmx' by' l n{ 'yVannj'MluxnuxbMz' k M' UZ' Myybl ZX' {n' j| l Va' XZ{Zl {bni ' MlX'nx'
UZ_nxZpMfZ'x'yVannj' XZ{Zl {bni ^@| XZl {y', an'yZxfZ' M| l Va' XZ{Zl {bni ' k M' UZ' Myi ZX' {n' aZju' VjZM' {NljZyS
yZxfZ'Snx'aZju', b'a xZVt'Vj b` ^

^ _Zx'yVannj' XZ{Zl {bni ' k M' UZ' Myybl ZX' _nx'ykn Z' UZaMfmx' yj' b' _xW{bni y^z Z{Zl {bni ' {tk Z' by' Y@à' {n' P@à'
<2 ^*_y{| XZl {y'MZ' jMz' {n' XZ{Zl {bni ' {aZt', bjl'yZxfZ' M' NkXqbnl Nj'XM^ANj' b` by' l n{ 'Njn, ZX'X| x` `'
XZ{Zl {bni ' {tk Z^@| XZl {y', bjl'xZk M' yZMZX'MlX', nxi 'nl 'yVannj'Myybl k Zl {y^*f' by' {aZ'y{| XZl {y'
xZyuni ybujb' {n' Ux` `y| _bMz' {yVannj, nxi 'nx'xZMk' b` k MZxbj' {n' jMy' {aZ'Zl {bx'X| xMlbnl 'n' XZ{Zl {bni ^
*_x| jZy'MZ' l n{ _njn, ZXSy{| XZl {y', bjl'yZxfZ' {aZ'xZk M' XZx'n' {aZ' XZ{Zl {bni ' uj| ynl Z' NkXqbnl Nj'XM^
<Mz' {y'MZ' xZyuni ybujZ' _nx'MxM' b` y{| XZl {y' {xM' yunx{Mlbnl ' ank Z^

PASS ROOM-IN SCHOOL BEHAVIOR INTERVENTION DURING ONSITE LEARNING

@| XZl {y', an' fbnjMz' yVannj' x| jZy' {aM', n| jX'l nX' Njt', MxM' {y| yuZl ybni ' _xnk 'yVannj' MZ' n' _Zl 'ujWZX'
b' {aZ' <^ @?<nnybZ' ^ jZxl MlbZ' {n' @/annj' @ yuZl ybni A?nkn' _nx' {aZ' Zl {bx' Xl' b' y{ZMk' n' _UZb' `yZl {
ank Z' jn| { 'n'yVannj' y| yuZl ybni A^ l ^ y{x| V{bnl Nj' ^ yby{M', bjl' y| uZxfyZ' {aZ'y{| XZl {y'Myybl ZX' {n' {aZ'
<^ @?nkn' ^t' jMyxnkn' {ZMwaZxy', bjl' uxnfbZ' b' y{x| V{bnl Nj' k MZxbj' _nx'y{| XZl {y'X| x` ` {aby' {tk Z^

H abjZ' b' {aZ' <^ @?xnkn' y{| XZl {y', bjl^

U^' t nk ujZ{Z' Mj' Myybl k Zl {y'

Y^' ?ZMk' jMfZ'x'Myybl k Zl {y'MZ' Vnk ujZ{ZXA'

P^ @f' w| bZ'jt', b'an| {Xbyx| u{b' `n{aZxy'

' Mj| xZ' {n' _njn, ^ <^ @?xnkn' x| jZy' k M' xZy| j{ b' NkXqbnl Nj' XbyVujb Ml' Vnl yZw| Zl VZy' b' Vj| Xb' `5| {n' _
@/annj' @ yuZl ybni ^

SATURDAY SCHOOL

@| XZl {y, anyZ UZaMfmx'lyl n{ yVannj MluxnuXZ'k M'UZ' Myb| ZX'@M| xXM' @/annj' Aa Zy' nx'Xnu'n_ MlX'ub| 'l u', bj'UZ'Vnk k | l bMZX' n'uMzI {y, aZl {aZbxyl| XZl {by' Myb| ZX'@M| xXM' @/annj' AaZxZ', bj' l n{ UZ' yVannj' Xby'xb| {xMl yunx(Mlonl 'n_ZxZX' uuxnuXZ' yVannj' UZaMfmx', bj'UZ'Z. uZV{ZX'X| xb' @M| xXM' @/annj'

REVERSE SUSPENSION

?ZfZxyZ'yl yuZl ybnl 'k M'UZ' | yZX' n' MXXzZyy| nl 'f'bnjZl {Sl nl 'fZxUNj' t' Ml| yb'Z' UZaMfmx'X| xb' {aZ' jMy' (a' , ZZi y'n_{aZ' tZM' @| XZl {y, bj' yZxfZ' uM' n' Ml' n| {n' yVannj' Vnl yZw' Zl VZ' tk k ZX' bMzj' t' njjn, b' {aZ' b' VxZl {S, b'a' {aZ' n{aZ' x'uM' (UZ' b' yZxfZX' M' {aZ' Zl X' n_{aZ' yVannj' tZM'

CAMPUS SUPERVISION

1Zy|k' 2 bXjZ' @/annj' uxn' fXZy' M' j{ y| uZxfybnl 'UZ' nxZ' yVannj' SX| xb' ' j| l Va\$MlX' M' fZx' yVannj' a' ' j' M' j{ Zk ujntZZy' y| y(nX' bM' yS' b' y(x| V' bn| M' M' XZy' S' yZVz' {M' z' yS' {ZM' aZ' xyS' Vn| l yZjnxys' @V| xb' t' @ZV' M' y' (SMlX' M' k' b' by' (xM' lnx' A' n_ n| x' yVannj' aM' fZ' {aZ' M' {anx' t' n' X' b' M' ujb' Z' y' | XZl {y' _nx' b' MluxnuXZ' UZaMfmx' @| XZl {y, an' XZ' t' {aZ' M' {anx' t' n' yVannj' Zk ujntZZy' lWZ' X' b' M' ujb' M' t' Vnl yZw' Zl VZy'

VIOLENCE

@/annjy' MlX' fbx| M' jZMl b' yZ' {b' y' MZ' l n{ u' jWZy' {n' k' MlZ' hni Zy' Mln| {f' bnjZl VZ' a' , Z' jZMl 'n' My' | XZl { {axZMzI b' {n' yann' {Si' bj' Snx' a' M' k' M' n{aZ' x' uZxynl S, Z, bj' {MlZ' M' W' bn| {n' Zl y| xZ' n| x' yVannj' Vnk k | l b' t' by' yMzS, aZ' {aZ' nx' l n{ {aZ' {axZM', My' k' M' k' b' M' hni b' ' k' Ml' Zx' a' aZyZ' M' W' bn| y' k' M' b' Vj| XZ' xZk' n' f' b' {aZ' y' | XZl { _nxk' {aZ' Zl Zx' M' y' | XZl { UnX' t' | l {b' {aZ' {axZM' Vm' UZ' Z' f' M' | MZXS' xZunx' (b' ' {aZ' y' | XZl { {n' unj' b' ZS' MlX' Vnl yZw' Zl VZy' AaZ' @VZk' ' OZ' b' Z' a' AaxZM' ' yyZyyk' Zl { uxn' {n' Vnj' k' M' UZ' b' b' M' ZX' uZl Xb' ' Vnj' Mlnx' M' bn| , b'a' X' b' {xb' (n_ b' M' y' , b'a' Z. uZx' (b' Z' b' {aZ' M' ZM' n_ yVannj' yMz' {t'

ZERO TOLERANCE POLICY

AaZxZ' by' M' %zn' {njZxMl VZ' unj' b' t' » Xx| ' yS' M' n' anj' MlX' pnx' jnni ' M' y' b' Z' Xx| ' yS' , ZMlnl yS' nx' xZuj' b' M' y' n_ , ZMlnl yyan| jX' l n{ UZ' nl ' yVannj' uxn' uZx' {t' a' < nnyZyybnl 'n_ b' ZM' k' y' nx' n{aZx' , ZMlnl yS' | yZX' nx' l n{ S , bj'UZ' ' xn| l Xy' _nx' tk k ZX' bMz' y| yuZl ybnl ' MlX' unyy' b' jZ' Z. u| jybnl ' a' Gbnj' M' bn| y' , bj' xZy| j{ ' b' yZx' bn| y' Vnl yZw' Zl VZy' , ab' a' k' M' b' Vj| XZ' xZ' Zx' M' y' | n' unj' b' Z' M' {anx' t' Z' y' nx' unyy' b' jZ' Z. u| jybnl ' a' ' X' X' b' bn| M' j' t' S Vnl y| j' M' bn| , b'a' X' b' {xb' (n_ b' M' y' , b'a' Z. uZx' (b' Z' b' yVannj' yMz' {t' , bj' XZ' {Zx' b' Z' b' b' b' M' bn| 'n_ {aZ' @VZk' ' OZ' b' Z' a' AaxZM' ' yyZyyk' Zl { uxn' {n' Vnj' by' l ZVZyyM' t' a'

H ZMlnl y' b' Vj| XZS' U| { ' MZ' l n{ j' k' b' ZX' {n' © ' b' ZM' k' yS' | l b' Z' yS' xZuj' b' M' , ZMlnl yS' k' Z' {M' i | | V' jZy' S' y' (x' M' b' a' { x' M' b' xyS' Z. ujn' y' b' Z' yS' b' x' b' t' M' b' ' M' jZy' j' k' WZ' b' Vj| XZ' X' S' Z' {V'

..

CAFETERIA GUIDELINES DURING ONSITE LEARNING

ž | xđ ` ` {aZ`Y0Uā`Y0Y0`yVannj` tZM\$Mj`y{ | XZl {y`k M`xZVZbZ`" ?" " UxZMl_My{`MlX`j | l Va`n_ZxZX`b` {aZ` Vnk k nl y`X | xđ ` ` {aZ` XZyb l MZX` {tk Zy` Ml`yVannj`a` ` | x{aZx` ` | bXZj b Zy` xZ` MxXb` ` ynVbVj` Xby{MlVb` ` ux{nVhny`MlX`{xMlyb{bni` {tk Zy`_nx`{aZ`Xb_ZxZl {`Vhanx{y,` bjj`UZ`Vnk k | l bMZX` | unl`n | xXZ{| x l`{n`nl ybZ` jZMx b`a`ž | xđ ` j | l VaSy{| XZl {y,` bjj`_njjn,` Z.uZV{Mlbnl yb` {aZ`VMZ`{ZxM{aMl`b Vj | XZ`{aZ`_njjn,` b` ©

RESPONSIBLE:

AMIZ`Mj`j | l Va`kZk y{n`{aZ`xZVt`Vj b` ` MZM, aZl`_b`byAZX`a`

OZZu`Mj`_nn`MlX`Xxđ`i`b` {aZ`Vnk k nl y`a`

?MbyZ`tn | x`aMlX`MlX,` Ml`{n`UZ`Xbyk`byZX`Ut`Ml`Mx`j`j`a`

RESPECTFUL:

H`Ml`uMlZl`{j`+`b`j`b`Z,` k`an | {V`{b` `b`_xnl`{n`_n`{aZ`xy`a`

ByZ`Ml`-b`yXZ`fnbVZ®,` aZl`{Ml`b` ` ,` k`a`n`{aZ`xy`a`

ByZ`yVannj`Ml`uxnuXb`MZ`j`Ml` | MZ`a`

SAFE:

OZZu`tn | x`aMl`xyS`ZZ`{SMlX`_nn`X`{n`tn | xyZ`_a`

tZ`M`MZ`n`_n`{aZ`xy`Mn | l`X`tn |`a`

H`Mj`Ml`Ml`Ml`Z`yuZZX`Ml`Mj`{tk Zy,` abjZ`b` {aZ`Vnk k nl y`a`

CELL PHONES & ELECTRONIC DEVICES

AaZ`ž`b`x`M`Mj`k Zy`l`n`xZy`unl`y`b`b`{t`nx`j`b`b`b`{t`_nx`jny`n`x`X`Ml`MlZ`{n`uZ`ynl`Ml`uxnuX`{t`U`n | `a`{`n`yVannj`a`

H`abjZ`b`n`l`y`bZ`jZMx`b` `SuZ`xynl`Ml`ZjZV`{xnl`b`XZ`fVZy`MZ`uZ`xk`k`{ZX`nl`V`Mk`u | ySan,`ZfZx`{aZ`t`k` | y`{`l`n`{`X`b`x | u`{`{aZ`jZMx`b` `Zl`f`bnl`k`Zl`{a`+`Zjj`uanl`ZyS`b`n`XyS`f`b`XZn` `Mk`ZySZ`{V`k` | y`{`UZ`n | {n`_yb`a`{`MlX`{`|`x`l`ZX`n`_X | xđ ` ` {aZ`yVannj`X`M`a` H`aZl`yVannj`UZ`b`yZ`M`a`X`M`S`Mj`uZ`xynl`Ml`ZjZV`{xnl`b`XZ`f`VZy`k` | y`{`UZ`{|`x`l`ZX`n`_MlX`l`n`{`b` | yZ`b`y`XZ`{aZ`yVannj`U | b`X`b` `a`+`Ml`xZ`{n`_njjn,` {aZ`l`Zy`j`b`Z`2`b`X`jZ`@`Vannj` ` | b`XZ`j`b`Zy`_nx`ZjZV`{xnl`b`XZ`f`VZy`k`M`xZy`j`{`b`Vnl`_b`y`M`l`bnl`n`_`{aZ`kZk`MlX`X`b`y`V`b`j`b`M`x`Vnl`yZ`w`Zl`VZ`a`

° I t'y{| XZI {', an' | yZy {aZbx' ZjZV{xnl b' XZfbZ' {n' _bjk 'M' xZyybZ' nx' b' MluxnuxbMZ' NW{b' b' t' M' Xpnx' uny{y' fXZn' _nn{MZ' n_ {aZ' NW{b' b' t' nl' ' ynVb' j' k ZXbM, 'bj' 'UZ' y| UfZV{ ' {n' Xb' M' u' j' b' N' t' ' NW{b' nl' ' M' X' yVannj' Vnl yZw' j' ZI VZy^a'

DRESS FOR SUCCESS

SKPS Dress Code Policy

Salem-Keizer Public Schools expects that all students will dress in a way that is appropriate for the school day or for any school-sponsored event. Student dress choices should respect the intent to sustain a community that is inclusive of a diverse range of identities. The primary responsibility for a student's attire resides with the student and their parent(s) or guardian(s). The school district is responsible for seeing that student attire does not interfere with the health or safety of any student, that student attire does not contribute to a hostile or intimidating atmosphere for any student, and that dress code enforcement does not reinforce or increase marginalization or oppression of any group based on race, sex, gender identity, gender expression, sexual orientation, ethnicity, religion, cultural observance, household income, or body type/size. Any restrictions to the way a student dresses must be necessary to support the overall educational goals of the school and must be explained within this dress code.

1. Basic Principle: Certain body parts must be covered for all students at all times.

Clothes must be worn in a way such that genitals, buttocks, breasts, and nipples are fully covered with opaque fabric. All items listed in the "must wear" and "may wear" categories below must meet this basic principle.

2. Students Must Wear^{*}, while following the basic principle of Section 1 above:

- A Shirt (with fabric in the front, back, and on the sides under the arms), AND
- Pants/jeans or the equivalent (for example, a skirt, sweatpants, leggings, a dress or shorts), AND
- Shoes.

**Courses that include attire as part of the curriculum (for example, professionalism, public speaking, and job readiness) may include assignment-specific dress, but should not focus on covering bodies in a particular way or promoting culturally-specific attire. Activity-specific shoes requirements are permitted (for example, athletic shoes for PE).*

3. Students May Wear, as long as these items do not violate Section 1 above:

- Hats facing straight forward or straight backward. Hats must allow the face to be visible to staff, and not interfere with the line of sight of any student or staff.
- Religious head coverings.
- Religious headwear.
- Hoodie sweatshirts are allowed; however, hoods may not cover the head indoors.
- Fitted pants, including opaque leggings, yoga pants and "skinny jeans"
- Pajamas
- Ripped jeans, as long as underwear and buttocks are not exposed.
- Tank tops, including spaghetti straps; halter tops
- Athletic attire
- Visible waistbands on undergarments or visible straps on undergarments worn under other clothing (as long as this is done in a way that does not violate Section 1 above).

4. Students Cannot Wear:

- Violent language or images.
- Gang-affiliated clothing.
- Images or language depicting drugs or alcohol (or any illegal item or activity).
- Hate speech, profanity, pornography.
- Images or language that creates a hostile or intimidating environment based on any protected class or consistently marginalized groups.
- Any clothing that reveals visible undergarments (visible waistbands and visible straps are allowed)
- Swimsuits (except as required in class or athletic practice).
- Accessories that could be considered dangerous or could be used as a weapon.
- Any item that obscures the face or ears (except as a religious observance).

Adjustments to the dress code may be made on a case-by-case basis for a student's IEP, 504 or social and emotional learning.

These dress code guidelines shall apply to regular school days and summer school days, as well as any school-related events and activities, such as graduation ceremonies, dances and prom.

Additional clothing or grooming, as determined by school Administrators, may not be allowed if they are not modest or school-appropriate, or if the items distract from the learning environment.

At XZI {y', an' fbnjMz' Ml t' n_ {aZ' MlnfZ'y{MZX' | bXZjb Zy' MZ' y| UfZV{ {n' XbMoujb Ml t' Vnl yZw' ZI VZy' b Vj| Xb' Vnl byMMl n_ {aZ' Vjn{ab' 'nx' bZk' a' AaZ' y{| XZI { k M' UZ' uxnfbXZ' M{Zx' Ml bZ' Vjn{ab' S b' I ZZZX' <MzI {y k M' UZ' Vnl {M{ZXS, aZl 'I ZVZyMl t' S{ n' uxnfbXZ' Ml uxnubMz' Vjn{ab' 'nx' {aZ' y{| XZI { {n' , ZM' t' nl {b' Zx' fbnjMl n_ {aZ' XxZy' VnXZ' Ml X' 'xnk b' 'unjbt' k M' xZy| j{ b' MXXl n' Mj' XbMoujb Ml t' Vnl yZw' ZI VZy' .

LOCKER GUIDELINES

z | xb' {aZ' YUyU'YUyU' yVannj' tZMSy{| XZI {y', bjj' Vnkt' {aZb' UWI uWI y' Ml X' l n{ | yZ' jnVi ZxyX| xb' 'nl yqZ' jZMl b' 'a' ° y{aZ' ž by' Mj' k Zyl n' xZyul y' b' t' 'nxjny/nx' XMI MIZ {n' uZyul Mj' unuZx' t' Sk' nl Zt' nx' fVj' MjZ' uZyul Mj' bZk' yyan| jX' l n{ UZ' y{nxZx' b' jnV' Zxy' .

BICYCLES, SKATEBOARDS, & SCOOTERS

Bunl' n' x' xZ{| xl' {n' nl yqZ' jZMl b' 'SyVannj' uZyul I Zj', bjj' Vnk' k | l bMz' l ZVZyMl t' | bXMI VZ' _nx'y{| XZI {y' Mln| l X' y{| XZI {y' xb' b' 'Ubt' VjZySy' MZUnMXY' Snx' yVnn{Zxy' * _{aZ' yVannj' aMj' Xb' {xb' ' Ml uxnfbMj' Sy{| XZI {y' MZ' {n' uMl' {aZk' b' {aZ' XZyb' l MZX' Ub' Z' xWi' 'Mz' M' @ MZUnMXY' k M' UZ' y{nxZx' b' {aZ' @V| xq' t' '5 _bZ' a' @annj' uZyul I Zj' , bjj' Vnk' k | l bMz' Ml t' MXXl n' Mj' b' _nx' Ml n' 'xZ' MXXb' ' Ubt' VjZ' Ml X' pnx' y' MZUnMXY' y{nxMz' uxn{ nVhjy' ° ' {aZ' ZfZl { {aM' {aby' by' M' nu{nl' _nx' y{| XZI {y' Sy{| XZI {y' , bjj' _njn, ' | bXMI VZ' Mj' Vnk' k | l bMzX' a' AaZ' yVannj' , bjj' l n{ Mj' y| k Z' b' Ml Vj' xZyul y' b' t' _nx'y{njZl' 'nx' XNk' MZX' uxnuzx' t' a' .

@| XZI {y' k | y{ _njn, ' Mj' {xM' b' jM' y' , aZl' xb' b' {n' Ml X' _xnk' yVannj' a' } jk Z' y' MZ' xZw' bZx' Ut' y{ MZ' jM' a' ByZ' n' _yi MZUnMXY' nx' yVnn{Zxy' nl' yVannj' uxnuzx' t' by' uxnab' bZx' Ut' @annj' 'EnMXX' <njbt' Ml X' ' VMI' { UZ' | yZx' nl' Vnk' u| yX| xb' ' yVannj' Ml X' pnx' yVannj' Ml b' t' an| xy' .

BUS CONDUCT

At the time of the incident, the student was on the bus. The student was not allowed to use the bus for any other purpose. The student was not allowed to use the bus for any other purpose. The student was not allowed to use the bus for any other purpose.

The student was not allowed to use the bus for any other purpose. The student was not allowed to use the bus for any other purpose. The student was not allowed to use the bus for any other purpose.

SCHOOL SUPPLIES

All school supplies are provided by the district. The student is responsible for providing their own supplies. The student is responsible for providing their own supplies. The student is responsible for providing their own supplies.

[6th Grade Supply List 2020-2021](#)

[7th Grade Supply List 2020-2021](#)

[8th Grade Supply List 2020-2021](#)

ACADEMIC GRADES

All academic grades are based on the student's performance. The student is responsible for providing their own supplies. The student is responsible for providing their own supplies. The student is responsible for providing their own supplies.

The student is responsible for providing their own supplies. The student is responsible for providing their own supplies. The student is responsible for providing their own supplies.

All academic grades are based on the student's performance. The student is responsible for providing their own supplies. The student is responsible for providing their own supplies. The student is responsible for providing their own supplies.

Grade	Grade Details
6	6th Grade
7	7th Grade

1	aU'aaö
2	aU'aaö
3	tZjn, ääö

*_{aZxZ'by'by} _bZl { 'b _nxk Mlml {n'uxnfZk'M xNkZSMy{ | XZl { 'k M'UZ'' xNkZX'My' _njjn, y©

Grade	Grade Details
<	<My'
3<	3n<My'

CITIZENSHIP GRADES

f bZzd yabu'' xNkZy' b XbVMZ' y{ | XZl { '' xn, {a' b' XZybNlJZ' y{ | Xt' aNlly' MlX' VJMyxnnk 'Vnl X| V{SMlX' MZ' Uxni Zl 'b {n', n'VMZ' nxbZy@H nxi ') Nlly'MlX' t nl X| V{a' f bZzd yabu'by'' xNkZX'My' _njjn, y©

Grade	Grade Details
5	5 {y{MlXb''
@	@Mly_W{nxt'
3	3ZZXy'_nx'*k uxnfZk Zl {'
B	Bl yMly_W{nxt'

ACADEMIC HONESTY POLICY

@ | XZl {y' MZ' Z.uZV{ZX' {n' XZk nl y{xMZ' b {Z' xdt', aZl 'Vnk ujZ{b' 'yVannj', nxi' MlX' MyZyyk Zl {y' Ut' _njjn, b' {aZ'' V\kZk b') nl Zy{t'<njb't'a' AaZl Z.{yZV{bml 'uxnfZkZyUn{a' {aZ'XZ_b bml 'MlX'Vnl yZw' Zl VZy' _nx'VaZMl b' a''

CHEATING & PLAGIARISM

¾ nutb' 'Nj' nx'uM{y' n_ Mln{aZx' y{ | XZl {y' Myö l k Zl { {aM', My' {n'aMfZ' UZZl 'Xnl Z' b Xb'X| Mj'tS jZl Xb' 'tn| xMyö l k Zl { 'n'Mln{aZx' y{ | XZl { 'n'Vhut\$nx'xZuxZyZl {b' 'n{aZxy-, nxi' My'tn| x'n, l a'

¾ nutb`X|xb`M{Zy{Snx}n, b`M{n{aZy{XZ|{n`Vnut`n`n`tn|x{Zy{`

¾ aM`b`Mly, Zxy`nx|n{k M{b`Zxnxynl`tn|x`n, l`nx`M{n{aZy, nxi, aZ|`tn|`aM`Z`UZZI`b`Zl`xZyuni`y`b`b`n`VhxxZV{b`{aZ`uM{Zx`

¾ aM`b`Mly, Zxy`nl`M{Zy{`uM{Zx`M{Zx`b`aM`UZZI`xZ|`xl`ZX`{n`{aZ`y{XZ|`S|`l`jZy`b`y{x|V{ZX`{n`k`M`Z`VhxxZV{tnl`y`

¾ jM`b`k`Q`nutb`n|x`nx`k`nxZ, nxxY`XbZV{t`x`nk`Myn|xVZ, b`an|`w`n{Zy`*`M`y`b`l`k`Zl`y`M`Z`b`Zl`b, a`b`a`xZ`ZxZl`VZ`Unni`y`M`Z`|`yZXS{aZ`{Z`M`aZ`x`k`|`y{k`M`Z`b`V`jZM`{aM`V`X`X`k`|`y{`UZ`b`Zl`{n`{aZ`M`{anxn`{aZ`k`M`Z`b`w`Zy{tnl`a`

-> CONSEQUENCES FOR ACADEMIC & CITIZENSHIP GRADES

Ü`AaZ`x`XZ`nl`{aZ`yuZ`V`b`M`y`b`l`k`Zl`{nx`{Zy{, b`j`M`{nk`M`b`M`j`+`UZ`Vnk`Z`M`-`a`

Y`AaZ`V`b`Zl`yab`x`XZ, b`j`M`{nk`M`b`M`j`+`UZ`jn, ZxZX`{n`M` -3`®`nx`-B`®`nx`{aZ`yb., ZZI`x`XZ`b`uZ`tnX`

8TH GRADE PROMOTION

PARTICIPATION REQUIREMENTS

AaZ`ä`a`x`XZ`<`nx`n`{tnl`l`+`Z`jZ`U`X`M`tnl`Z`fZl`{`b`y`M`Z, M`X`n`x`{anyZ`y{XZl`{y, an`XZk`nl`y`{xM`Z`M`M`XZk`b`y`y`WZy`{axn|`an|`{aZ`b`Z`b`a`{a`x`XZ`+`Z`M`M`X`V`nl`{b`|`Z`xZyuni`y`b`jZ`M`X`uxnX|`V`b`Z`UZaM`f`tnx`{axn|`a`{aZ`j`M`{yb., ZZI`y`n`y`Vannj`a`@|XZl`{y, an`_`M`{n`k`M`b`{M`k`b`b`k`|`k`M`M`XZk`b`M`X`UZaM`f`tnx`y`{M`X`M`X`y`k`M`l`n`{UZ`b`f`Z`X`{n`u`M`{b`w`M`Z`b`{aZ`uxnk`n`{tnl`Z`fZl`{y`

½@|XZl`{y`xZVZ`b`b`{axZ`j`U`M`b`x`XZy`nl`{aZ`j`M`{, n`yb., ZZI`x`XZ`b`uZ`tnX`uxn`xZy`xZunx`y`k`M`l`n`{UZ`uZ`k`b`{Z`X`{n`u`M`{b`w`M`Z`b`{aZ`<`nx`n`{tnl`+`Z`xZk`nl`+`M`X`+`Z`jZ`U`M`tnl`Z`fZl`{y`

½@|XZl`{y`xZVZ`b`b`X`y`M`uj`b`M`t`xZ`Z`x`V`y`X|`xb`{aZ`j`M`{yb., ZZI`x`XZ`b`uZ`tnX`k`M`l`n`{UZ`uZ`k`b`{Z`X`{n`u`M`{b`w`M`Z`b`{aZ`<`nx`n`{tnl`+`Z`xZk`nl`+`M`X`+`Z`jZ`U`M`tnl`Z`fZl`{y`

½@|XZl`{y, b`a`V`b`M`j`M`{Zl`X`M`VZ`j`y`nx`k`nxZ`|`I`Z.`M`yZ`X`M`y`Zl`V`Z`y`X`|`xb`{aZ`j`M`{, n`yb., ZZI`x`XZ`b`uZ`tnX`y`k`M`l`n`{UZ`uZ`k`b`{Z`X`{n`u`M`{b`w`M`Z`b`{aZ`<`nx`n`{tnl`+`Z`xZk`nl`+`M`X`+`Z`jZ`U`M`tnl`Z`fZl`{y`

½@|XZl`{Z`j`b`b`b`b`+`b`j`UZ`XZ`Z`x`b`Z`X`nl`M`b`X`b`X`|`M`j`y`|XZl`{U`M`y`M`{aZ`X`y`XZ`{tnl`n`X`k`b`b`y`M`tnl`a`

H`Z`M`Z`Z`M`Z`x`{n`y|`uunx`{y{XZl`{y`b`k`ZZ`b`{aZ`yZ`xZw`b`Zk`Zl`{y`M`y`{aZ`+`uxZ`uM`Z`n`x`ab`a`y`Vannj`S`M`X`|`I`XZ`y`{M`X`{aM`y|`WZ`y`j`j`uxZ`uM`M`tnl`xZw`b`Zy`M`V`nj`j`M`n`x`M`b`fZ`Z`n`x`{UZ, ZZI`ank`Z`M`X`y`Vannj`a`<`jZ`M`Z`Xn`l`n`{aZ`y`b`M`Z`{n`Vnl`{M`{`|`y, b`a`M`l`w`Zy`{tnl`y`tn|`k`M`aM`Z`

PERSONAL PROPERTY

The District assumes no responsibility or liability for loss or damage to personal property brought on campus. 3n{Z@aZ ž by{X} XnZyI n{ Vxkt b y| xMlVZ _nx{aZ uZxynl NjlxnuZx{t n_y| XZI {y^

Aaby b V| XZySU| { by| n{ jtk kZX' n© t Zji uanl ZySVn{ab` S VjM jMlnxyS{Mj Zy, bNkyStunXy, 2 <U'ujM ZxyS fbxZn` Nk ZysubVjZySj MZUhnMxySyVhn{ZxyS{n tySZ{V^

AaZ _njin, b` kZk yMZl n{ Mjn, ZX MjyWannjSMIX,, lji UZ Vhl byMZX b Ukn| a{nl yWannj` xn| I Xy©

Å1MjZxjb a{uZI y

Å<Zx_| k Zp njn` I Z`

INTERNET ACCESS & GOOGLE APPS FOR EDUCATION

@yZk 10ZBZx<| Ujb' @vannjy'n_Zxy'y| XZI {y MWZyy'n {aZ Xb{Xb{y Vnk u| {Zx' I Z{, nxi 'MIX' {aZ'† {ZxI Z{^ AnXM S jZMl b` Vnk u| {Zx' yI bjj by M VZyymt uM{ n_y| XZI {uxZuM Mlbnl _nx{aZ', nxi ujWZ M IX j bZ jnl` jZMl b` a` † {ZxI Z{ MWZyy' M' {aZ' k bXjZ' yWannj' jZfZj' y| uujZk ZI {y ZX| VMlbnl Nj xZyn| xVZy' MIX' by k nl k nZX Ut yWannj y{M_ a`

- H Z,, lji UZ xZw' Zy{b` uZk bylbnl {n MWbM Z M' nn' jZ` uuy_nx" X| VMlbnl MW h| I { _nxMj' y| XZI {y^ H k a {aby MW h| I {y| XZI {y,, lji aMjZ MWZyy'n (nn' jZ ž nVys' (nn' jZ t NjZl XMS (k Nj MIX' NXX kbnl Nj Zy f b Zy^
- ° j j y| XZI {y MZ byj ZX M yZx MW h| I { MIX uMjy,, nX' {n y{ nXZ' {aZ b,, nxi nl {aZ y| XZI { bZ' yaM b` yZy fZx` ByZxyan| jX I n{ Z. uZV' {aM' bZy y{ nXZ' nl {aZ Xb{Xb{y Zy fZy MZ ux b MZ^ 3nx yan| jX {aZ t Z. uZV' {aM' ,, ZUy kZy f b k ZX MZ' | I {X MWZ MjZ^
- @| XZI {y,, an MZ l n{ | yb` {aZ Vnk u| {Zxy M l uxn u b MZ j t,, lji UZ xZ{ | X ZX' n Vj Mj y nxy ZI { {n,, nxi b M n{ aZ x MZ Vh_ {aZ 1 b M X t 2 ZX b M ZI {Zx^° X X kbnl Nj X b M u j b M t' M kbnl k M UZ {M ZI^ a`

*k unx M l { 3n{Z©_ t n| Xn l n{,, M l { t n| x V b X {n a M j Z' MWZyy'n {aZ b {ZxI Z{,, abZ M j y W ann j S t n| k | y{ y| U k k M n k ,, ab b M l UZ n U{ M b ZX b {aZ k M b n b Z^ a`

LIBRARY CHECK OUT

' nx{aZ YÜYÜ'YÜYÜ yWannj' tZMxyWannj' uZxynl I Zj MZ', Nk b` _nx` | bX M VZ M n| I X j b X M t VaZ V' n| { MIX' y| XZI {y MWZyy'n j b X M t k M Z x b j y b t nk uxZaZl y b Z ž by{ M VZ' t Z M l b` MIX' n l y k Z j Z M l b` a` ° ° XZy V b {bnl n j b X M t | yZ M l X p n X Unni' g n x x Z y n| x V Z A VaZ V' n| {, lji UZ Vnk k | I b M Z X', aZl {aZ xZ' by Vj M b b M lbnl {n l VZyymt ux n{ n Vnjy^

TEXTBOOKS

AZ. {Unni y' MZ' u| xVaMjZX' Ut' 1Zy j b' 2 bXjZ' @vannj' MIX' unx f b Z X' {n' y| XZI {y _nx' | yZ' {axn|` an| { {aZ' yWannj' tZM^° j j' Unni y' MZ' {n' UZ' xZ{ | X ZX' M {Zx' {aZ' Vn| xyZ' by Vnk u j Z{Zx^° y' l n{ ZX' M l n f Z Sy| XZI {y,, k a`

jny{ ' nx' XNk MZX {Z. {Unni y' , bjj' xZVzbZ' M. b Z' @uZVbB' | bXZjb Zy' Mn | I X' {Z. {Unni y' X| xB' ' f nk uxZal ybZ' ž by{MIVZ' 1ZMl b' , bjj' UZ' Vnk k | I bVMZX' Mj' VjM bZ' X' {axn| ' an| { ' {aZ' tZM' a'

FERPA

<MZI {y' M X' y{ | XZI {y' Uä' tZM' y' M X' njXZx' aM' FZ' {aZ' _njjn, b' ' xB' a{y' xZ' M Xb' ' y{ | XZI { ' xZVnxXy©

- 'I yuZV{ ' M X' xZfZ, ' ZX| VMlbnl ' xZVnxXy'
- ?Zw' Zy{ ' Nk ZI Xk ZI { ' {n' ZX| VMlbnl ' xZVnxXy'
- f nl yZI { ' {n' Xb' jnyZ' uZxynl Mj' t' bXZI { b' b' MjZ' b' _nxk Mlbnl ' Vnl { Nk ZX' b' y{ | XZI { ZX| VMlbnl ' xZVnxXyS Z. VZu{ ' {n' {aZ' Z. {ZI { ' {aM' {aby' uxnVZX| xZ' M' {anx' b' Z' y' Xb' jny| xZ' , b' an| { ' Vnl yZI { ' a'
- ' bZ' MMnk ujM' { , b' a' {aZ' B' a' ž ZuM' {k ZI { ' n' " X| VMlbnl ' b' {aZ' ž by{xb' { ' aM' y' MjZ' X' {n' Vnk uj' t' , b' a' {aZ' " Nk b' t' " X| VMlbnl Mj' ? b' a{y' M X' < b' Vt' " V{ ' ž' " ? < " Ä'

AaZyZ' xB' a{y' MZ' XZ' {MjZ' X' b' @jZk ' OZ' b' x' unj' b' Zy' M X' uxnVZX| xZyS, ab' a' ' VMl' ' UZ' _n| I X' nl' {aZ' Xb' {xb' { ' , ZUy' b' Z' M' a' y' Vannj' n' _bZ' n' x' b' {aZ' n' _bZ' n' {aZ' y| uZ' xB' {ZI XZI { ' a'

EMERGENCY DRILLS DURING ONSITE LEARNING

An' ZI y| xZ' {aZ' y' MZ' {t' n' y{ | XZI {y' M X' y{ M SxZ' | jM' Zk Zx' ZI Vt' X' x' b' j' MZ' aZ' X' {axn| ' an| { ' {aZ' y' Vannj' t' ZM' a' @| XZI {y' xZVzbZ' ' b' y{x| V{bnl ' M X' uxNw{bZ' uxnuZx' Z' Fw| Mlbnl ' uxnVZX| xZy' b' ' Nk Xb' b' n' n' {aZ' y' MZ' {t' k ZNj' xZy' a' ? Z' | jM' {xN' b' ' M X' uxNw{bZ' ZI y| xZy' {aZ' y' MZ' {t' M X' yZV| xB' t' n' _n| x' Vnk k | I b' t' b' {aZ' Z' fZI { ' n' _Mz' Nj' Zk Zx' ZI Vt' a' .

ACTUAL INCIDENTS©Parents and guardians should wait to receive information directly from the principal or district offices before taking action. Information from students may be incomplete or not accurate.

AaZ' Xb' {xb' { , bjj' k MIZ' ZfZxt' Z' _nx{ ' {n' xZjM' | u{ ' n' X' MZ' b' _nxk Mlbnl S, ab' a' , bjj' uxn' f' XZ' uMZI {y' M X' ' | M X' b' M y' , b' a' {aZ' Z. uZV{ZX' Nw{bnl y' {aZ' t' yan| jX' {MIZ' X| xB' ' {aZ' b' VbXZI { ' a'

MEDICATION

<xZy' Vw' b' bnl ' M X' l' nl ' uxZy' Vw' b' bnl ' k ZX' b' Mlbnl ' y' k M' UZ' " bZ' I ' Mj' y' Vannj' nl j' t' Ut' {xN' b' ZX' y{ M' a' <MZI {y' MZ' xZy' unl y' b' jZ' _nx' Ux' b' ' b' {aZ' k ZX' b' Mlbnl ' {n' {aZ' y' Vannj' n' _bZ' S' b' {aZ' n' x' b' b' Nj' Vnl { Nk ZX' M X' Vnk ujZ' {b' ' {aZ' ž Nj' t' 2 ZX' b' Mlbnl ' " Xk b' by{ xMlbnl ' ? ZVnxX' _nxk' a' .

Medication will not be administered unless accompanied by written parental consent and appropriate instructions. GZxUNj' xZw' Zy{y' {n' VaMl' Z' k ZX' b' Mlbnl ' Nk n| I {yS' xZw' ZI Vt' S' nx' Nk b' by{ xMlbnl ' {b' Zy' VMl' n{ UZ' NwZu{ZX' a' j' I Zyy' M' @' Vannj' .

@| XZI {y' , an' UZ' Vnk Z' bjj' nx' MZ' b' h' xZ' X' yan| jX' xZunx{ ' b' k ZX' b' MjZ' t' {n' M' {ZM' a' Z' x' n' x' {n' {aZ' n' _bZ' a' **Students will not be permitted to make calls regarding illness from classroom phones or personal cell phones.** * _ Ml' b' h' x' t' ' by' k b' nx' S' k b' nx' _by{ ' Nk' by' ' bZ' I S' M X' {aZ' y{ | XZI { ' by' xZ' { | x' Z' X' {n' ' Vj' Mj' y' a' * _ Ml' b' h' x' t' ' by' yZ' x' bn| yS

uMzi {y', bji'UZ'In{bZx'k k ZXbMz}t'x'by'k unx{M'f{aM'f{aZ'yVannj'aM'y'Zk Zx'ZI Vt'uanl Z'I | k UZxy'b' nXZx{n'k MZ'Vnl {Nw', b'a'uMzi {y'a''

Please be sure emergency contact information is kept up-to-date My'VaM' Zy'nW| x'a*_l n'uMzi {Vnl {M'f' by'k NKS{aZ'y{| XZI {', bji'xZ{| x' {n'VjMy'a''

SAFE USE AREAS

z | x'b' {aZ'YU'YU'YU'YU'yVannj'tZM'S_| x{aZ'x' | bXMVZ', bji'UZ'Vnk k | l bMZX'f'n'y{| XZI {y'xZ' Nxb' 'MZY' n_{aZ'U| bXb' 'MIX'VNk u|y'f{aM', bji'UZ'NwZy'WjZ'X| x'b' 'nl yqZ'jZM' b' {k Zy'a''







LESLIE STUDENTS SHOW LION PRIDE BY BEING RESPONSIBLE, RESPECTFUL, AND SAFE

' { 1ZyjZ' 2 bXjZ' @Vannj'S, Z' _nV| y' nl ' unyq'Z' UZaM'f'nx' y| uunx{y' {axn| ' a' n| x' yVannj', bZ' UZaM'f'nx' Z' .uZV{M'f'nl y' M'X' <xnVZX| xZy' uxn' xM' ' VjZ'X' 1bnl ' <xZ'Z'a' Aaxn| ' a' {aZ' 1bnl ' <xZ' uxn' xM' S'y{| XZI {y' MZ' ZI Vn| xMZX' {n' ZI ' MZ' b' UZaM'f'nx' {aM' _ny{Z' ' xn, {a' b' {aZ' MZM'y' n_uZxynl M'ixZyuni y' b' b' f' SxZyZV' | j' UZaM'f'nx' {n, M'Xy' uZZxy' M'X' uxnuzx{t'SM'y', Zjj' M'y'MZ' UZaM'f'nx' a' AaZyZ' UZaM'f'nx' MZ' {M' a' {axn| ' an| { {aZ' tZM' M' Vxq' bM' {k Zy' {n' y| uunx{ {aZ' jZM' b' ' ZI f'bnl k ZI {a' @| XZI {y', an' Vnl y' b' ZI {j' t' XZk nl y' {xMZ' unyq'Z' UZaM'f'nx' MZ' xZVn' l b'Z' {axn| ' an| { {aZ' tZM' b' M'f' MZ' {t' n_, M'y'a''

<jZM'y' yZZ' {aZ' 1ZyjZ' 2 bXjZ' @Vannj' @Vannj' H bZ' ' E ZaM'f'nx' " .uZV{M'f'nl y' M'X' <xnVZX| xZy' VaM'f'nl {aZ' _njn, b' ' uMz' _nx' NXXq'bnl M'f' b' _nx' M'f'nl a''

..
..
..
..
..
..
..
..
..
..

LESLIE LIONS SCHOOL-WIDE BEHAVIOR MATRIX

AREA	RESPONSIBLE	RESPECTFUL	SAFE
Classroom 	<p>Be on time with your binder, planner, and class materials.</p> <p>Be an active listener.</p> <p>Follow class procedures; return borrowed materials.</p>	<p>Honor others' opinions and right to learn despite differences.</p> <p>Follow directions and classroom expectations.</p> <p>Collaborate with others at appropriate times.</p>	<p>Keep your hands and feet to yourself.</p> <p>Report inappropriate behavior towards others.</p> <p>Use materials appropriately.</p>
Hallways 	<p>Keep the hallways clean; food, drinks, and cell phones are not allowed.</p> <p>Carry a hall pass during non-passing time.</p> <p>Arrive to class on time.</p>	<p>Respect the personal space and property of others.</p> <p>Speak quietly and use school-appropriate language.</p>	<p>Keep your hands and feet to yourself.</p> <p>Be aware of people around you.</p> <p>Walk on the right side, taking the stairs one at a time.</p>
Restrooms 	<p>Use the restrooms during passing time, or with teacher permission.</p> <p>Use the restroom that is closest to the classroom.</p> <p>Use the restroom for its intended purpose.</p>	<p>Respect the privacy of others.</p> <p>Keep cell phones off and put away.</p> <p>Use school-appropriate language.</p>	<p>Keep your hands and feet to yourself.</p> <p>Report inappropriate behavior and vandalism to an adult.</p>
Commons 	<p>Take all lunch items to the recycling area when finished.</p> <p>Keep all food and drink in the commons.</p> <p>Raise your hand and wait to be dismissed by an adult.</p>	<p>Wait patiently in line without cutting in front of others.</p> <p>Use an "inside voice" when talking with others.</p> <p>Use school-appropriate language.</p>	<p>Keep your hands, feet, and food to yourself.</p> <p>Be aware of others around you.</p> <p>Walk at a safe speed at all times while in the commons.</p>
Locker Room/ Gym 	<p>Pick up clothes and shoes, and lock them in PE locker.</p> <p>Come prepared with PE clothes; food drinks, and cell phones are not allowed.</p> <p>Use time wisely; change clothes quickly, and be ready to go!</p>	<p>Respect the personal space, privacy, and property of others.</p> <p>Use good sportsmanship by playing by the rules.</p> <p>Use equipment appropriately.</p> <p>Use school-appropriate language.</p>	<p>Keep your hands, feet, and objects to yourself.</p> <p>Report inappropriate behavior to an adult.</p> <p>Walk at a safe speed at all times while in the locker room and/or transitioning to the gym.</p>
Arrival & Departure 	<p>Come to school ready to learn with binder, planner, and other class materials.</p> <p>Make transportation arrangements ahead of time.</p> <p>Follow the school dress code; arrive to school dressed for success!</p>	<p>Respect the personal space and property of others.</p> <p>Follow directions and bus expectations.</p> <p>Use school-appropriate language.</p>	<p>Line up and load busses in a safe manner, keeping your hands and feet to yourself.</p> <p>Use crosswalks and be aware of traffic.</p> <p>Walk bikes, skateboards, etc. off school property, and wear your helmet.</p>

